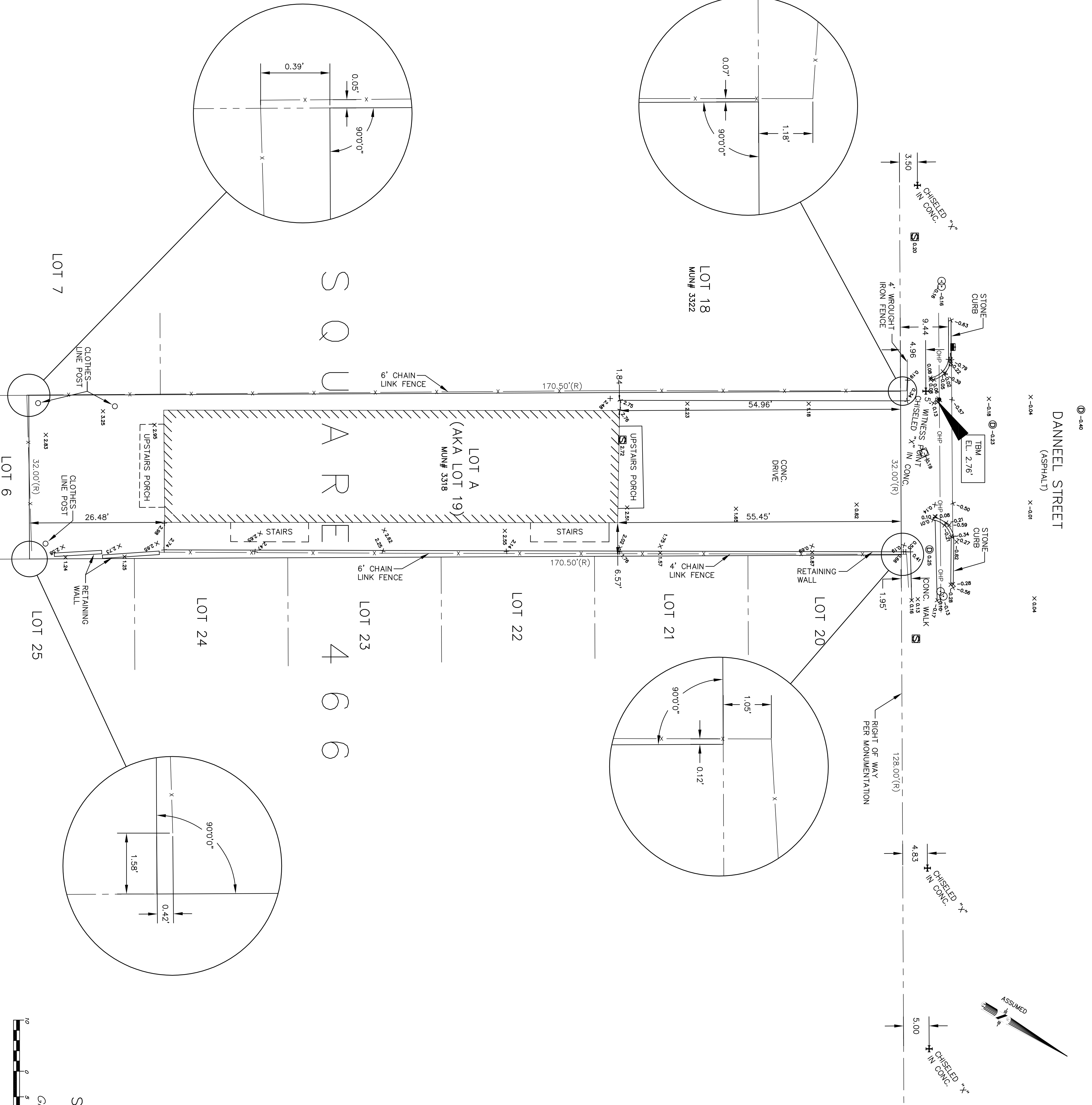


**LEGEND**

- BUILDING
- BASELINE
- EXISTING RIGHT OF WAY
- CATCH BASIN
- CULVERT
- DROP INLET, DRAIN LINE
- DROP INLET, DRAIN LINE
- COMMUNICATIONS MANHOLE, COMM. LINE
- DRAIN MANHOLE, DRAIN LINE
- DRAIN MANHOLE, DRAIN LINE
- ELECTRICAL MANHOLE, ELEC. LINE
- GAS MANHOLE, GAS LINE
- SEWER MANHOLE, SEWER LINE
- TELEPHONE MANHOLE, TELE. LINE
- TRAFFIC MANHOLE, TRAFFIC LINE
- WATER MANHOLE, WATER LINE
- UTILITY POLE / OVERHEAD LINES
- ELECTRIC, TELEPHONE, CABLE TV
- ELEC TOWER / OVERHEAD LINES
- FENCE
- UTILITY BOX
- UTILITY CLEANOUT
- UTILITY METER
- UTILITY PEDESTAL
- UTILITY VALVE
- FIRE HYDRANT
- LIGHT STANDARD
- TRAFFIC LIGHT
- SIGN
- RESIDENTIAL MAILBOX
- TREE
- PP DEADMAN

**DANNEEL STREET**  
(ASPHALT)



**TEMPORARY BENCHMARK**  
TBM = 630 NAIL W/ 7/16 SET IN POWER POLE  
EL.=2.76'

The Servitudes and Restrictions shown on this survey are limited to those set forth in the description of the servitudes and restrictions in the description of the servitudes and restrictions. Servitudes and Restrictions are shown hereon. The surveyor has made no other investigation or research in compiling the data for this survey.

I have consulted the Federal Insurance Administration Flood Hazard Boundary Maps and found this property is in a Special Flood Hazard Area.

FIRM ZONE: ZONE A1

AREAS OF 100-YEAR FLOOD, BASE FLOOD ELEVATIONS AND FLOOD HAZARD FACTORS DETERMINED.

COMMUNITY PANEL NO. 2252020160E

MAP DATED/REVISED: MARCH 1, 1984

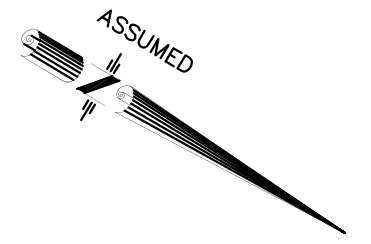
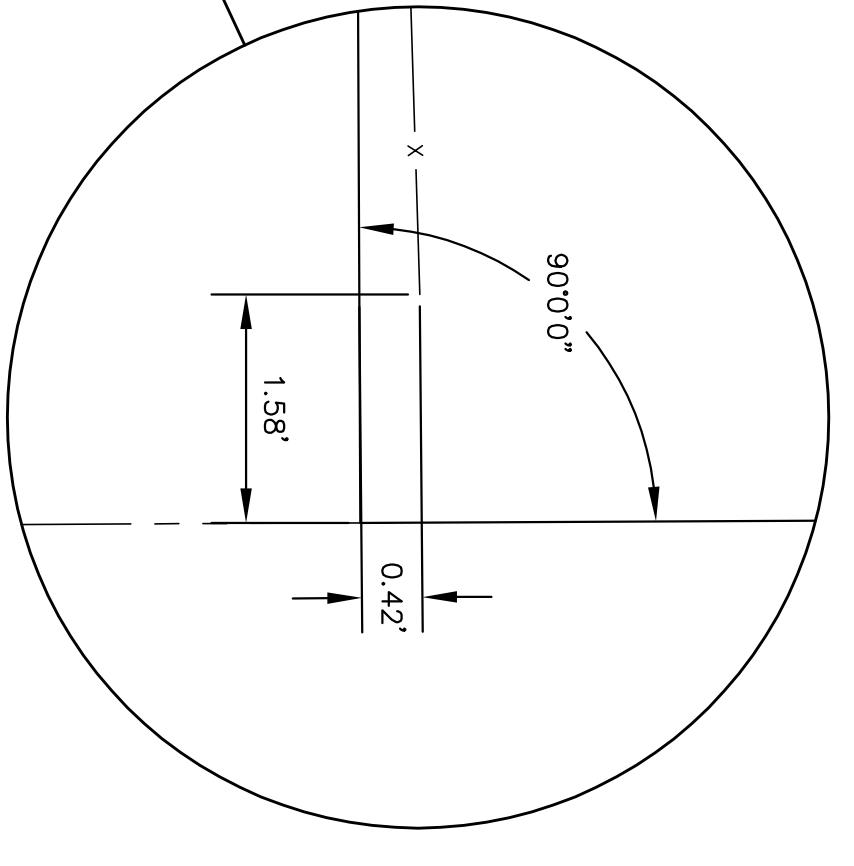
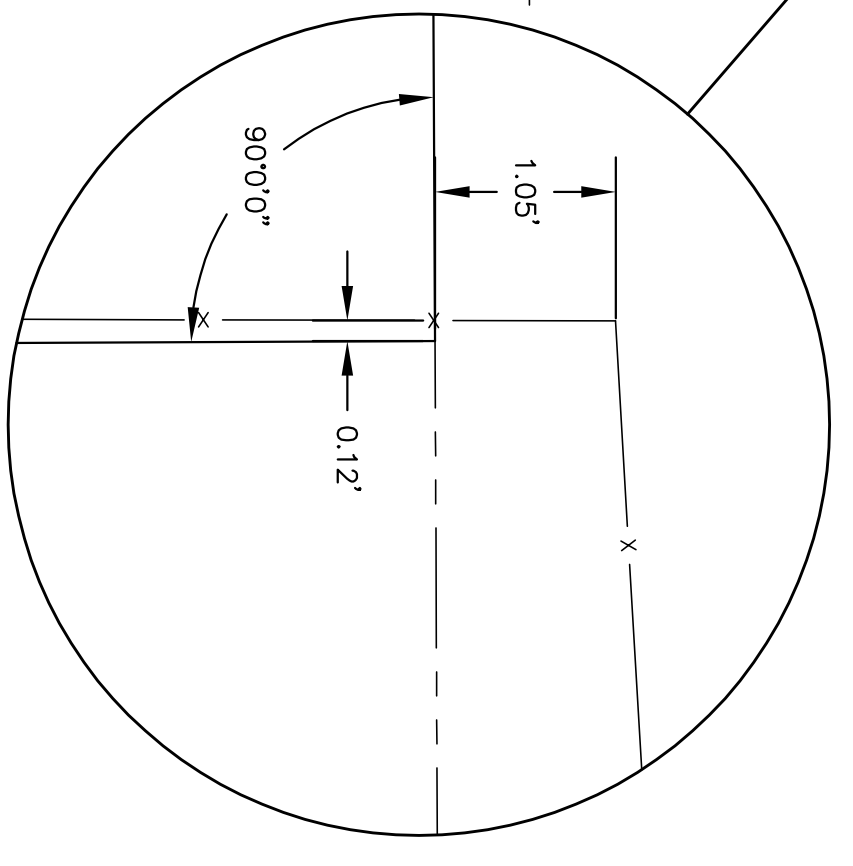
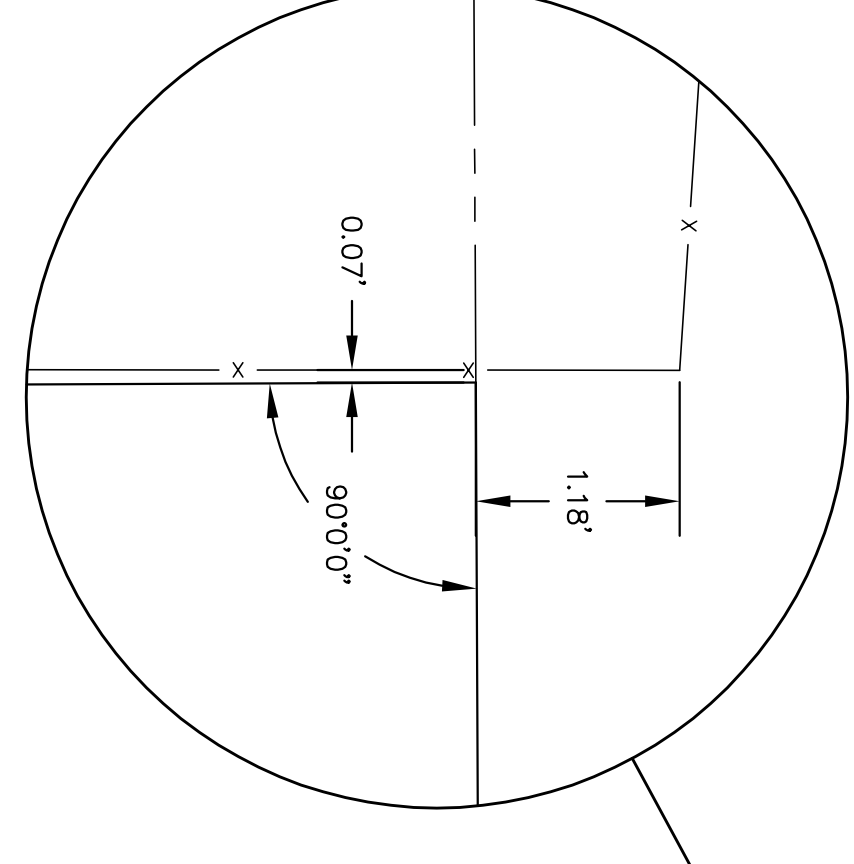
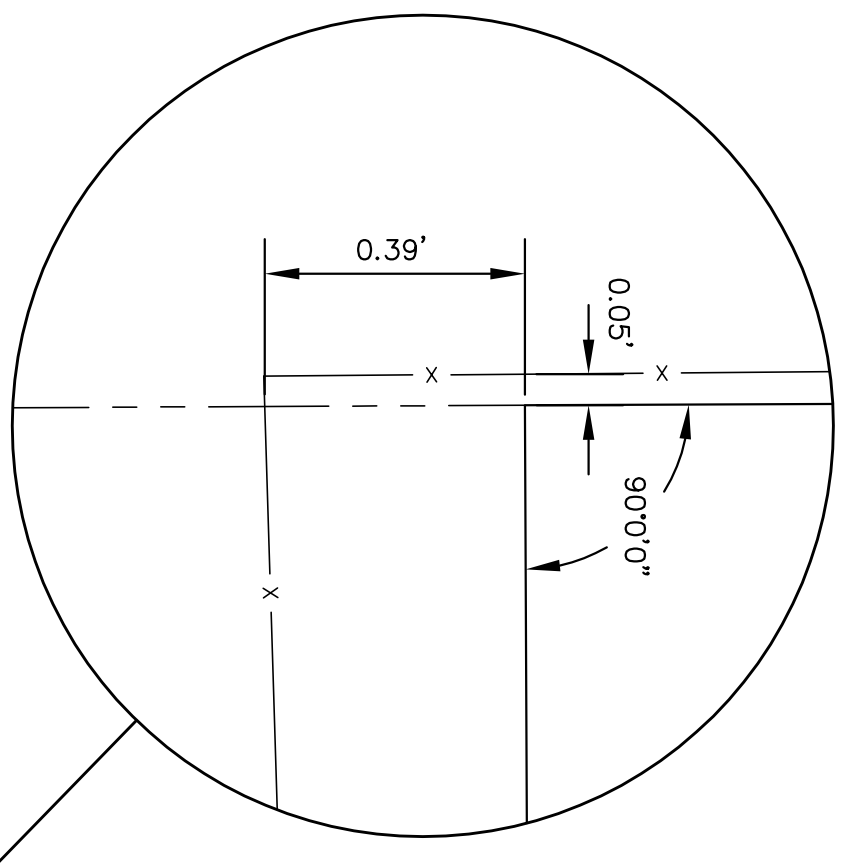
**GENERAL NOTES**

THE LOCATIONS OF UNDERGROUND AND OTHER NONVISIBLE UTILITIES SHOWN HEREON HAVE BEEN DETERMINED FROM DATA EITHER FURNISHED BY THE AGENCIES CONTROLLING SUCH DATA AND/OR EXTRACTED FROM RECORDS MADE BY SUCH AGENCIES. THE SURFACE FEATURES OF LOCATIONS ARE SHOWN. THE ACTUAL NONVISIBLE LOCATIONS MAY VARY FROM THOSE SHOWN HEREON. EACH AGENCY SHOULD BE CONTACTED RELATIVE TO THE PRESENCE OR ABSENCE OF SUCH UTILITIES AND SUCH LOCATIONS SHOWN HEREON, INCLUDING PRIOR TO EXCAVATION AND DIGGING.

ALL ELEVATIONS SHOWN REFER TO N.A.V.D. 88 DATUM.

REFERENCE B.M. = ALCO

ELEVATION = 617 N.A.V.D. 88 (2004.85)

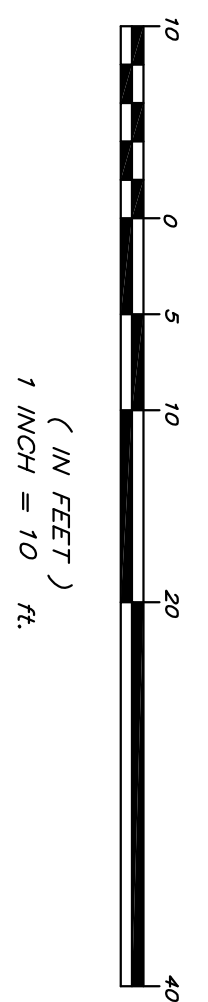


VICINITY MAP  
NOT TO SCALE

TOLEDANO STREET (SIDE)

SHEET ADD-01-SU4

GRAPHIC SCALE



BOUNDARY SURVEY  
OF  
3318 DANNEEL STREET  
NEW ORLEANS, LOUISIANA 70115

**BPM**  
CORPORATION, L.L.C.  
Professional Land Surveyors  
534 WILLIAMS BOULEVARD  
E-mail: [blmcorp@bpmcorporation.com](mailto:blmcorp@bpmcorporation.com)  
(504) 468-8800  
Fax No. (504) 467-0065  
CITY OF KENNER  
JEFFERSON PARISH, LOUISIANA, 70062

REGISTERED PROFESSIONAL LAND SURVEYOR  
JOHN S. TEEGARDEN  
REGISTRATION NO. 4635

I certify that this plot represents an actual ground survey made by me or under my direction, and it does not conform to the requirements for the Minimum Standards for Property Boundary Surveys as found in Louisiana Administrative Code TITLE 46: LXI, Chapter 29 for a Class C survey.

JAHNCKE & BURNS, LLC

MARK	DESCRIPTION	DATE	BY	CHK'D

SCALE:	1" = 10'
DATE:	12/04/2009
DRAWN BY:	J.S.C.
CHECKED BY:	K.A.B.
FILE NO.:	7010
PROJECT NO.:	7010
SHEET:	1 OF 1